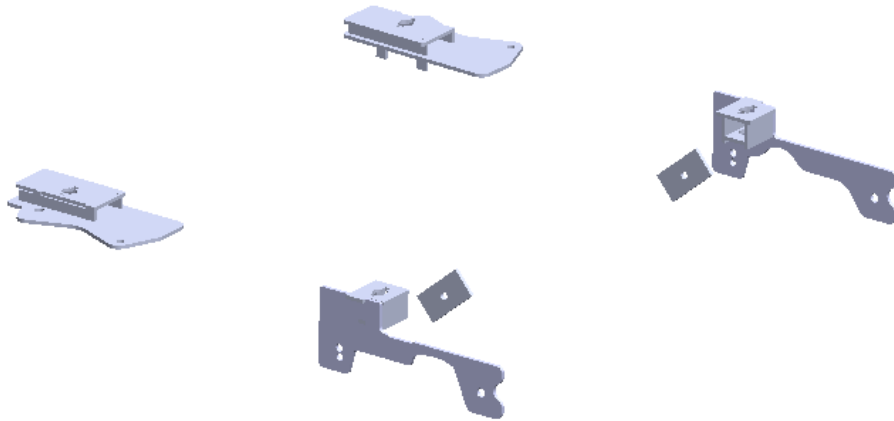




# DODGE

## 12K Custom SuperRail Mounting Kit

# #3125



Gross Trailer Weight (Maximum).....12,000 lbs.  
Vertical Load Weight (Max. Pin Weight) .....3,000 lbs.

---

## Installation Instructions

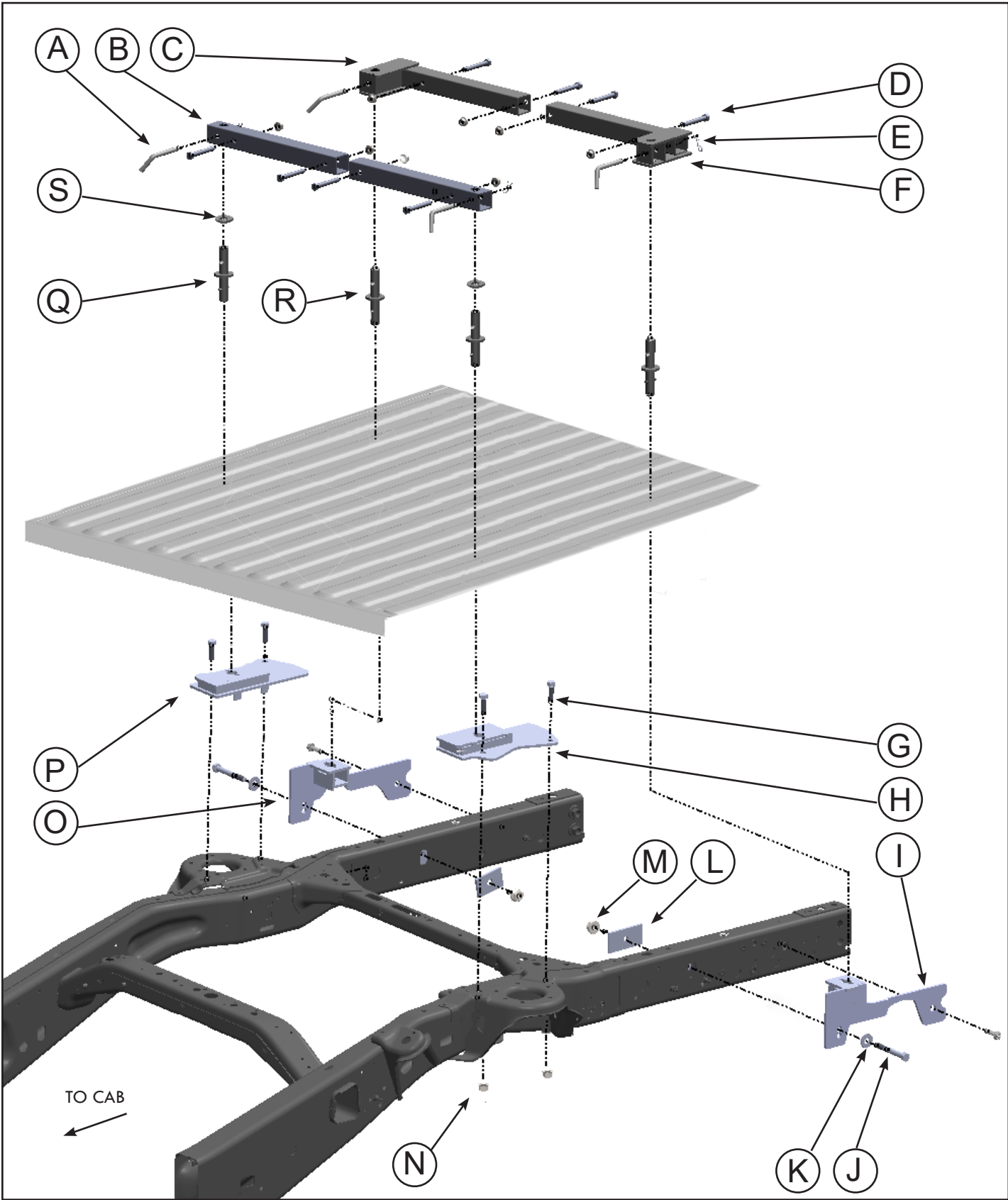
---

### SPECIFICATIONS

- Fits 2019 Dodge 1500 ton trucks w/ the new body style\*
- Hitch is located center of the axle.

*\*Does not fit the RAM 1500 equipped with a factory air suspension*

# MOUNTING HARDWARE PARTS IDENTIFICATION



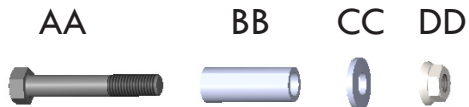
# PARTS LIST

## #3125 SUPER RAIL MOUNTING KIT

\*DS = driver side \*\*PS = passenger side

ITEM	DESCRIPTION	PART NO.	QTY.
A	BASE RAIL RELEASE PIN	08060001	4
B	FRONT BASE RAIL	31200601	2
C	REAR **PS BASE RAIL TUBE	31200805	1
D	1/2"-13 X 4" HEX BOLT	98010191	2
E	#3 PIN CLIP	98410127	4
F	REAR *DS BASE RAIL TUBE	31200806	1
G	M12 X 40 HEX BOLT	98010111	4
H	FRONT *DS MOUNTING BRACKET	312501	1
I	REAR *DS MOUNTING BRACKET	312504	1
J	1/2"-13 X 4" HEX BOLT	98010191	2
K	1/2" USS HARDENED STEEL FLAT WASHER	98250144	2
L	BACKUP PLATE	08160307	2
M	1/2"-13 SERRATED FLANGE NUT	98150201	10
N	M12 SERRATED FLANGE NUT	98150171	4
O	REAR **PS MOUNTING BRACKET	312503	1
P	FRONT **PS MOUNTING BRACKET	312502	1
Q	FRONT (TITAN) MOUNTING POST	311507	2
R	REAR MOUNTING POST	330701	2
S	MOUNTING POST FLANGE WASHER	33070102	2
<b>CONDITIONAL HARDWARE</b>			
AA	5/8"-11 X 4 HEX BOLT	98010228	2
BB	REAR FRAME SPACER	33180701	2
CC	5/8"-11 SERRATED FLANGE NUT	98150200	2
DD	5/8" CONICAL TOOTH WASHER	98150200	2

Use this hardware only if  
no factory receiver is in the  
frame (see page 6).

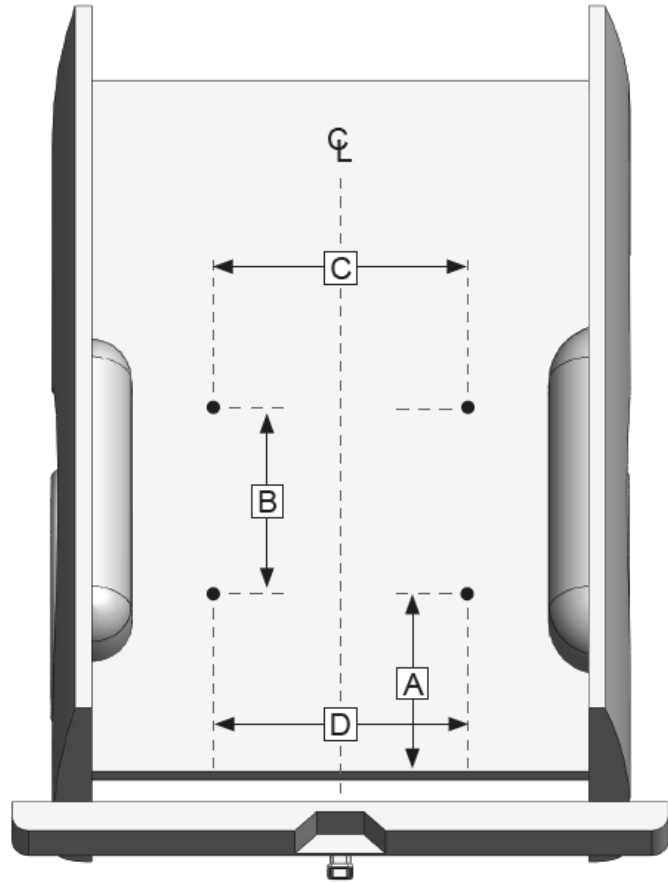


# MARKING THE BED FOR DRILLING

## LAYOUT METHOD

If you purchased an installation template, please proceed "Template Method." Templates are sold separately.

1. Referencing "Truck Bed Dimension Table" below, measure and mark from the back of the bed forward, the values for "A" and "B". Do this at any point on both sides of the bed.
2. Draw a line across the bed from mark to mark.
3. Find the centerline of the bed.
4. Draw a line down the middle of the bed from front-to-rear.
5. Center the measurement of "C" across the centerline at the front-most line you made in step 2 and mark the measurement on each side (parallel to the centerline).
6. Center the measurement of "D" for the rear most line made in step 2, and again mark the measurement on each side (parallel to the centerline). This will locate the 4 drill holes.

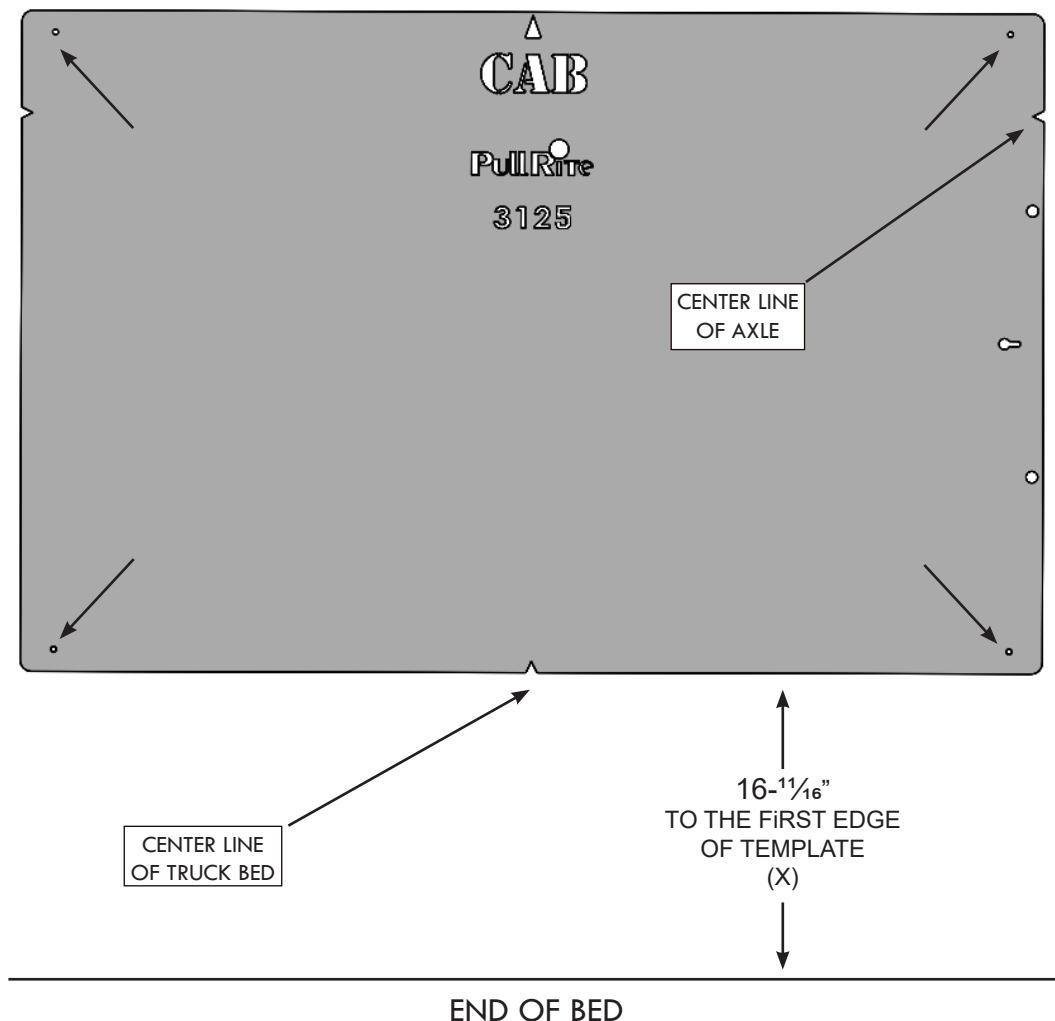


TRUCK BED DIMENSION TABLE					
LAYOUT METHOD				TEMPLATE METHOD	
"A"	"B"	"C"	"D"	"X"	TEMPLATE PART#
17 1/16"	25 7/8"	35 7/8"	39 1/8"	16-1/16"	31250000

# TEMPLATE METHOD

1. Lay the template in the truck bed, centering it from side-to-side, and parallel to the end of the truck bed using the dimension "X" listed in "Truck Bed Dimension Table."
2. Mark the 4 holes as indicated below, making sure the template does not move (see Installation Tip).

**INSTALLATION TIP:** The **TEMPLATE** should be orientated as shown in the drawing below. To avoid drilling holes in error from out of tolerance bed-to-frame dimensions, mark the hole locations as lightly as possible if a center or transfer punch is used. Then use a very small diameter drill bit to drill one location on either side of bed. Place the Mounting Brackets against the frame to determine the correctness of the bed hole locations relative to the prepunched holes in the Mounting Bracket and existing frame holes. Adjust the template pattern relative to the end of the bed, as necessary, to move the bed holes nearer the center of the mounting bracket holes. Note also, the information etched into the template — the direction of the cab, the template number and the revision date. As one last measure, the template has a tendency to move when placed on the slick paint of new truck beds, and it may be helpful to place a small piece of **NON-SKID** matting, such as "SCOOT-GARD"™ or simply use duct tape on each corner to help keep the template from moving.

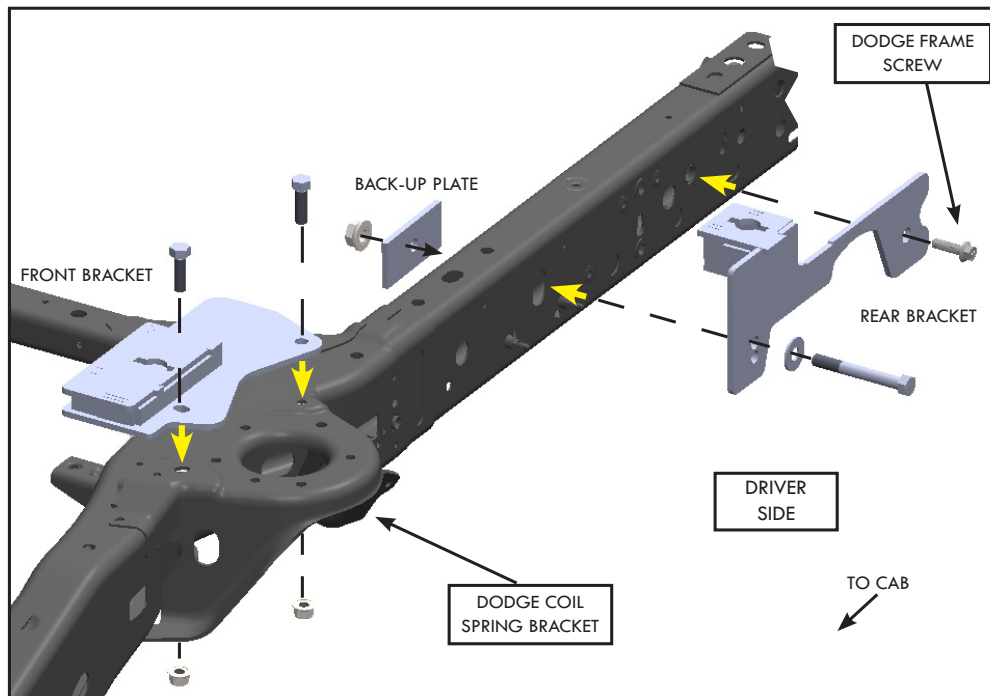


# INSTALLATION

## Installation

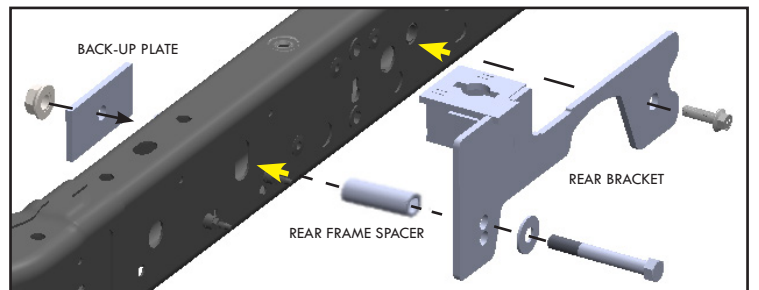
1. Locate the coil spring bracket on both sides of the frame and place front mounting brackets on top (orientate using holes shown below with the M12 bolts). Clamp the bracket using a "C" clamp.
2. Align the rear mounting brackets with the existing holes on the frame (orientate using the 1/2" X 4" bolts and Dodge frame screws on illustration below). Clamp the mounting brackets flush to the side of the frame using a "C" clamp.
3. Use transparent tape to cover the mounting post hole on the top of each mounting bracket (when the pilot hole is drilled through the bed, the tape will be pierced by the small drill; it should be positioned in the center of the 1" mounting post hole).
4. Drill the first 1/16" pilot hole through the truck bed over the rear hole on the driver side where you made the mark during the "Marking Bed for Drilling." The bit should come down through the 1" mounting post hole, piercing the transparent tape, aiding the centering of the bracket front-to-rear and side-to-side.
5. If the pilot hole is off center to the 1" mounting post hole, remember to adjust all the pilot hole locations accordingly.

**WARNING:** Before proceeding, you must verify that each pilot hole is centered over the 1" mounting post hole on each bracket before the 2" mounting post holes are drilled through the bed.



## Conditional Hardware

In some installs, no factory receiver is present in the truck frame. In this situation use the 5/8" hardware provided for the rear brackets. Place spacer tube into the truck frame and tighten bracket fasteners to 151 foot lbs.



# INSTALLATION

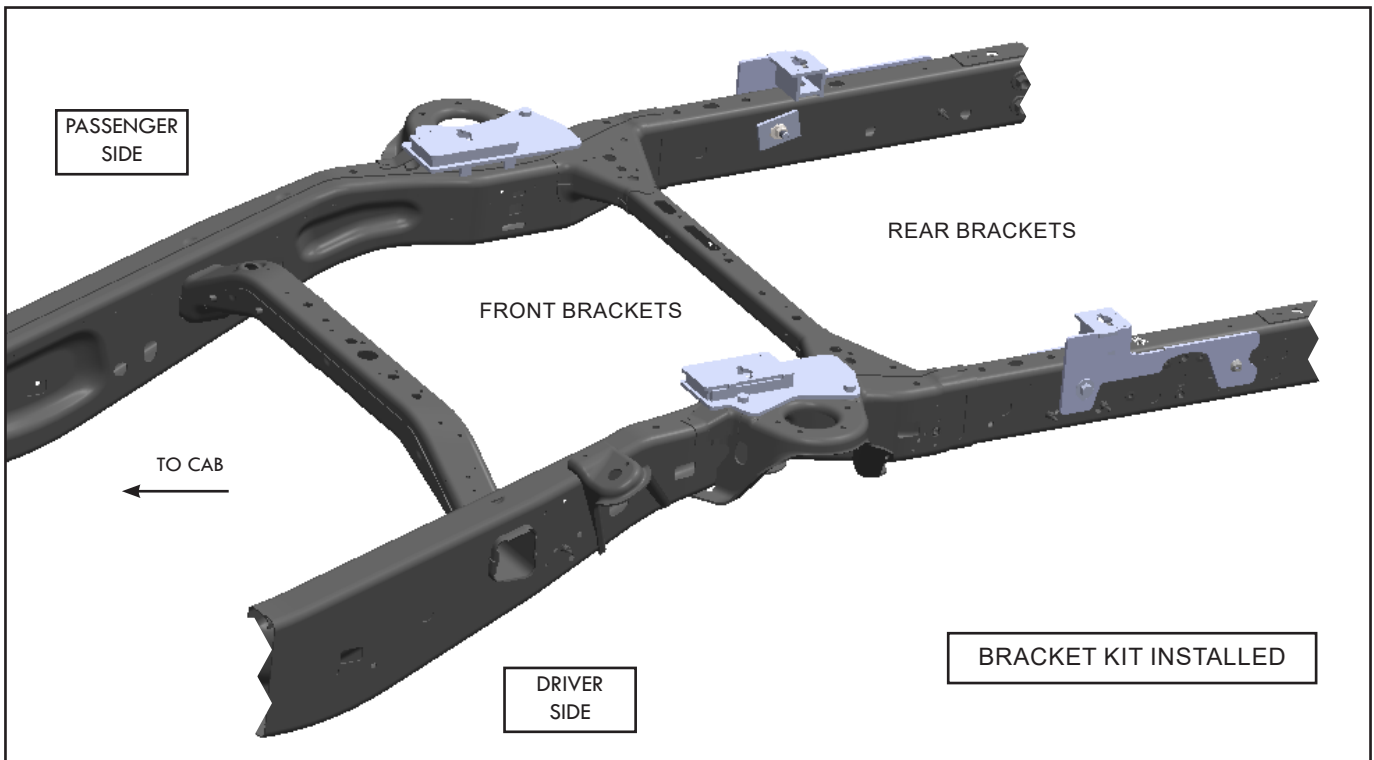
## **Part 2: Drilling the Bed & Bracket Installation**

1. Remove the mounting brackets and use a 2" hole saw centered over the 1/16" pilot hole and cut the bed for the mounting posts.
2. De-bur inside the holes and use a paint stick to touch up the edges.

## **Bracket Installation**

1. Tighten the rear mounting brackets flush to the sides of the frame using the 1/2" x 4" bracket bolt, spacer and washer with 1/2" nut and Back-Up Plate on opposite side of frame. Fasten the back of bracket with using the Dodge frame screw in place (Electric bracket may be removed for easier install of bracket to frame). Tighten according to the torque table below.
2. Tighten front mounting bracket on top of spring coil bracket with the (2) M12 bolts and flange nuts. Tighten according to the torque table below.

NOTE: Use a hand wrench to tighten the flange nut onto the bolts. DO NOT use an impact wrench.



TORQUE TABLE	
1/2" Bolt	75 ft. lbs.
M12 Bolt	100 ft. lbs.
5/8" Bolt	151 ft. lbs.



*MANUFACTURED BY:*

PULLIAM ENTERPRISES, INC.  
13790 East Jefferson Blvd.  
Mishawaka, IN 46545  
(574) 259-1520 • (800) 443-2307  
info@pullrite.com • www.pullrite.com