



OWNER'S MANUAL



#4600 #4615

ISRX Series Fifth Wheel Hitch (25K)
for trucks using the ISR system.

Gross Trailer Weight (Maximum) 25,000 lbs.

Vertical Load Weight (Max. Pin Weight)...6,000 lbs.

The following instructions provide valuable information regarding the function and proper use of the Super 5th & SuperLite ISRX Towing System.

YOU MUST COMPLETELY READ THE INSTRUCTIONS WITHIN THIS MANUAL, PRIOR TO OPERATING THE HITCH TO PREVENT UNNECESSARY DAMAGE TO THE HITCH, VEHICLE, OR TRAILER.

For more information, please call PullRite at (800) 443-2307.

TABLE OF CONTENTS

SYSTEM WEIGHT RATING VS. COMPONENT WEIGHT RATING.....	3
CAB CLEARANCE.....	3
HITCH MODELS.....	4
SUPER 5TH COUPLER KIT.....	5
SUPERLITE COUPLER KIT.....	5
LUBRICATION / ANNUAL MAINTENANCE.....	6
READ INSTRUCTIONS PROVIDED WITH YOUR COUPLER KIT.....	7
HITCH INSTALLATION.....	8
ISRX COMPATIBLE RAILS.....	9
#4600 / 4615 PARTS LIST & EXPLODED VIEW.....	10
RELATED ACESSORIES.....	11
YEAR LIMITED WARRANTY.....	i
PRODUCT REGISTRATION.....	ii

SYSTEM WEIGHT RATING VS. COMPONENT WEIGHT RATING

A towing system includes each vehicle and component involved in towing. Each item in your towing system has a capacity or weight rating. Your trailer has a Gross Vehicle Weight Rating or GVWR. Your truck has a towing capacity, a payload capacity, and possibly more. In addition, your fifth wheel hitch has a weight rating. This weight rating must be at, or above, the GVWR of your trailer for you to tow safely. In addition, if your truck can tow larger loads (has a larger capacity) than the rating of your hitch, your system is only safe to tow loads at the lower rating, that of the hitch.

Your ISR mounting system will also have a weight rating, just like your fifth wheel hitch. Many times, these ratings are designed to match, but this is not always the case. Your ISR mounting system may be higher rated than your fifth wheel hitch, but it also could be lower depending on the components involved. The lowest rating of any one component in the system becomes the rating of the entire system. If your system is rated to 18,000 lbs., and your hitch is rated at 24,000 lbs., the weight rating of the entire system will not be above 18,000 lbs. Other components in the system could lower the actual system rating further.

It is the end users responsibility to ensure a safe towing experience. To this end, it is your responsibility to ensure that the truck, trailer, hitching components, and all other items involved are rated or have a capacity sufficient for the loads involved.

CAB CLEARANCE

If you are towing with a short bed truck, you may be aware that adequate cab clearance is needed for sharp angle turns and damage to the truck cab could occur if the clearance is not calculated correctly.

This formula is a guide for checking clearance: (cab to axle) - (half of the trailer width) = cab clearance.

Here are a few examples:

BED LENGTH	CAB-TO-AXLE DIST.	CAB-TO-TRAILER CLEARANCE
8 ft.	56"	56" - 48" = 8" of cab clearance
6 ft.	40"	40" - 48" = - 8" negative cab clearance
5-1/2 ft.	28-1/4"	28.25" - 48" = -19.75 negative cab clearance

As you can see, an 8 ft. bed truck provides more clearance than needed, whereas a 6 ft. bed truck does not allow for a full 90 degree turn and does not provide sufficient cab clearance by 8 inches. Not ideal, but manageable provided you watch your tighter turns. The 5-1/2 ft. bed truck provides even less cab clearance.

If towing with a truck bed that is 6 ft. or less, you must take into consideration that most hitch installations are located center over the truck axle. This hitch will provide rearward offset to the truck axle, depending on the coupler kit (4" maximum rearward offset for #4820 and 7 1/2" maximum rearward offset for #4810), thus increasing the cab to trailer turn radius.

For short bed truck applications the Pullrite SuperGlide hitch models will always provide better cab clearance, however, ISRX Super 5th and SuperLite hitches do provide the option of additional cab clearance greater than any other fixed or stationary hitch. The trade off is that the ISRX, particularly the ISRX SuperLite, is much lighter, has a smaller footprint in the bed, is easier to hitch up, and is less expensive than a SuperGlide hitch.

HITCH MODELS

The PullRite ISRX is available for trucks with ISR hitch mounting systems. Below are the base model specs.

#4600



Hitch Base **#4630**

Super 5th coupler kit **#4820**

25K Tow rating

101 lbs. w/ head plate removed

#4615



Hitch Base **#4630**

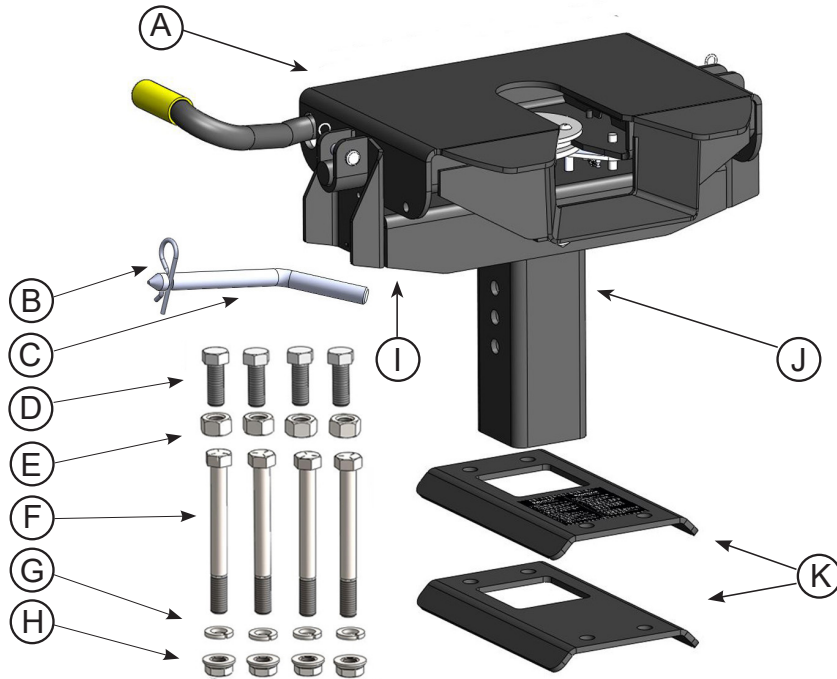
Super 5th coupler kit **#4810**

25K Tow rating

78 lbs. lifting weight

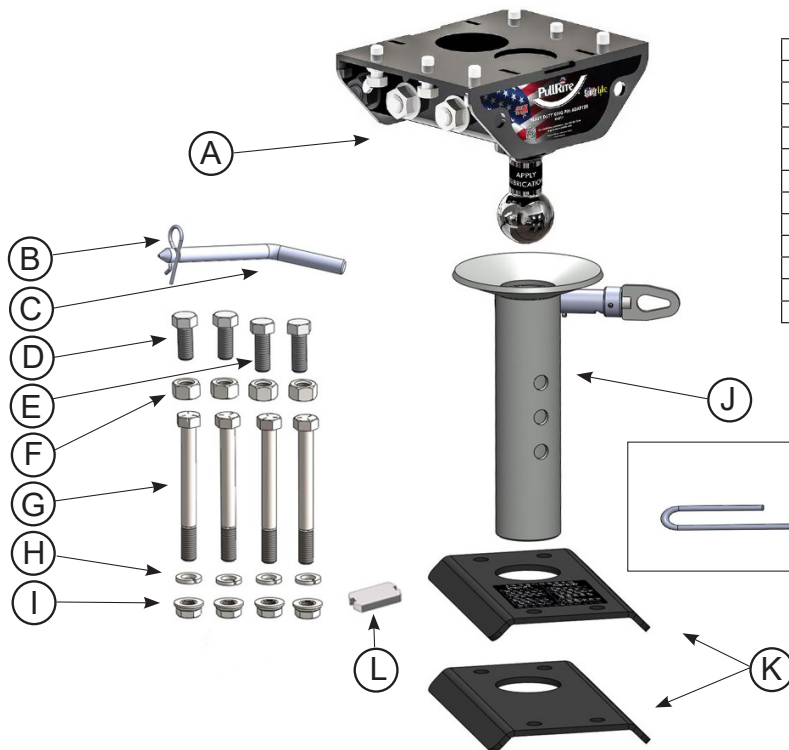
COUPLER KITS

Super 5th Coupler Kit #4820



A	HEAD PLATE ASSEMBLY	3601	1
B	# 9 PIN CLIP	98410143	1
C	5/8" DIA. X 4" HITCH PIN	010019	1
D	5/8"-11 X 1.5" TAP BOLT	98010231	4
E	5/8" - 11 HEAVY HEX NUT	98150176	4
F	5/8"-11 X 6" HEX CAP SCREW	98010304	4
G	5/8" LOCK WASHER	98200133	4
H	5/8"-11 SERRATED FLANGE NUT	98150200	4
I	ROCKER ARM ASSEMBLY	4821	1
J	COLUMN ASSEMBLY	4822	1
K	SUPER 5TH ISRX COLUMN PLATES	48240001	2

SuperLite Coupler Kit #4810



A	HD KINGPIN ADAPTER ASSEMBLY	4811	1
B	# 9 PIN CLIP	98410143	1
C	5/8" DIA. X 4" HITCH PIN	010019	1
D	5/8"-11 X 2" TAP BOLT	98010219	2
E	5/8"-11 X 2 1/2" TAP BOLT	98010220	2
F	5/8" - 11 HEAVY HEX NUT	98150176	4
G	5/8"-11 X 6" HEX CAP SCREW	98010304	4
H	5/8" LOCK WASHER	98200133	4
I	5/8"-11 SERRATED FLANGE NUT	98150200	4
J	FUNNEL ASSEMBLY	4813	1
K	SUPERLITE ISRX FUNNEL PLATES	48142001	2
L	DAMPER	24070001	1
M	SUPERLITE ISRX RELEASE HANDLE	4812	1

LUBRICATION

DO NOT OPERATE HITCH UNTIL YOU READ THIS SECTION!

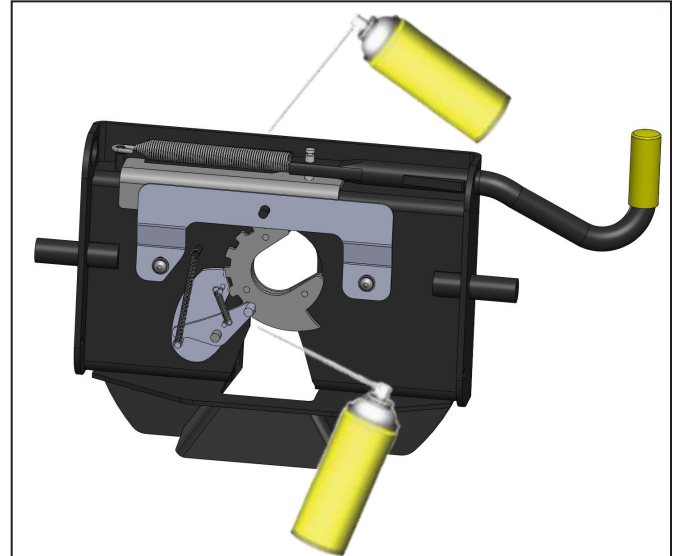
HEAD PLATE ASSEMBLY

The Head Plate must be lubricated before each trip or as needed. PullRite recommends using a light lubricant spray such as WD-40 or 3-IN-ONE Oil to prevent the attraction of dust and debris.

Be sure the inside of the Head Plate is free of any obstructions prior to lubrication and before each use, check the Latch System's locking mechanism to ensure it is in working order.

When lubricating the Latch System using a dry graphite spray, place the Latch System in both closed and open positions to cover the spring and pin effectively. If using a wet lube, pull the Release Handle repeatedly between the open and closed positions, so the lubricant is evenly spread among the moving parts.

Be sure the King Pin is clean and free from rust. A light coating of wet lubricant should be used before each trip or as needed.



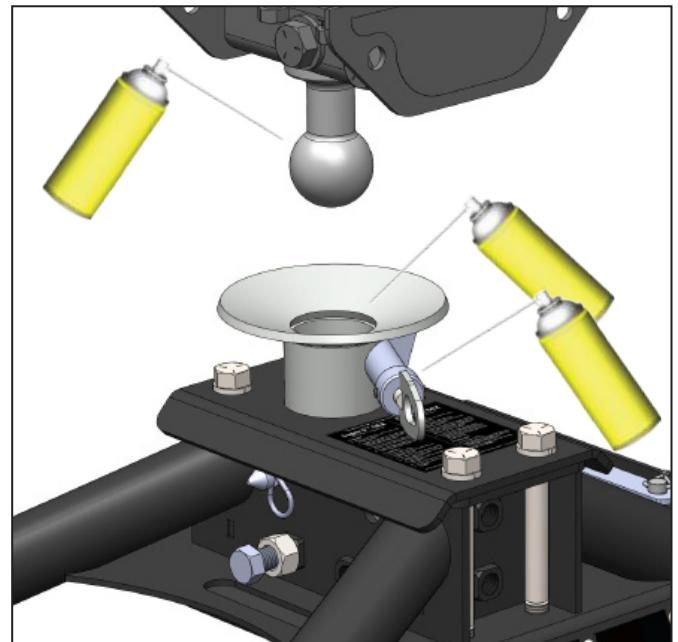
KING PIN ADAPTER BALL & FUNNEL

The King Pin Adapter Ball, Funnel and Latch Pin must be lubricated before each trip or as needed. PullRite recommends using a dry graphite spray to prevent the attraction of dust and debris. A light wet lubricant such as WD-40 can also be used, but the two types of lubricants should not be used together.

Be sure the Funnel assembly is free of any obstructions prior to lubrication and before each use. Spray the funnel to aid in hitching up.

When lubricating the Latch Pin using a dry graphite spray, place the Latch Pin in both closed and open positions to cover the spring and pin effectively. If using a wet lube, pull the Latch Pin repeatedly between the open and closed positions, so the lubricant is evenly spread among the moving parts.

Be sure the King Pin Adapter Ball is clean and free from rust. A light coating of lubricant should be used before each trip or as needed.



ANNUAL MAINTENANCE

Inspect all hitch hardware to verify that it is securely fastened. Inspect set screws and bolts for tightness and general condition. When storing your ISRX hitch, you should be sure that the latch mechanism and hitch parts are lubricated with WD-40, or dry graphite spray. Cover the entire assembly to prevent accumulation of dirt, grime, and rust.

READ ALL INSTRUCTIONS PROVIDED WITH YOUR COUPLER KIT

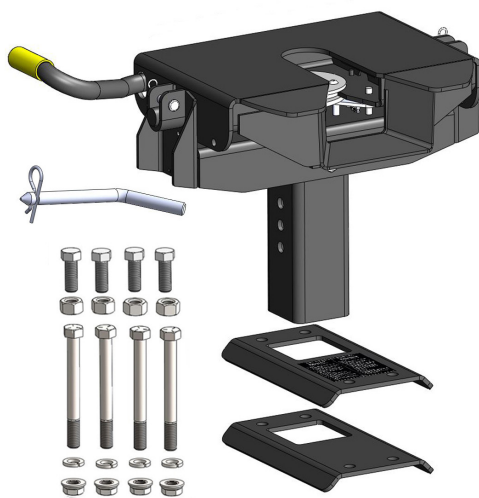
IMPORTANT

- For #4820 Coupler Kit, refer to the [OEX Super 5th 4700, 4800, 4900 manual](#).
- For #4810 Coupler Kit, refer to the [OEX SuperLite 4715, 4815 ,4915 manual](#).

These manuals cover details on the following subjects :

- Adjusting the coupler kit behind the axle, allowing for offset settings.
- Coupler kit height adjustment for optimal towing.
- Hitching and Unhitching.
- Fifth wheel plate / Funnel operation.
- Problem vs. Solution.
- Torque tables.
- Exploded views.

Super 5th #4820 Coupler Kit



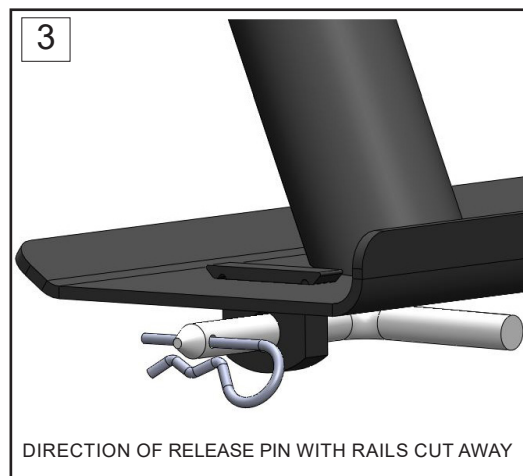
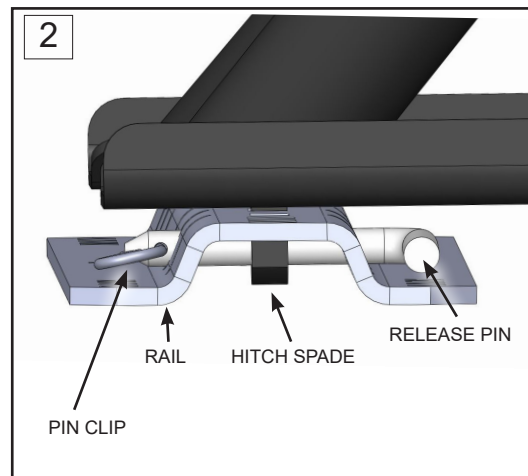
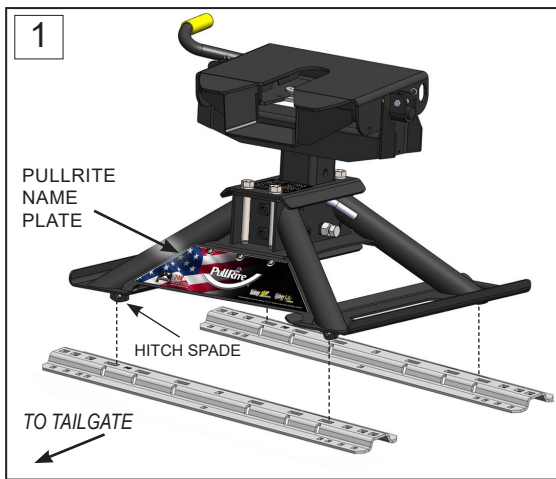
SuperLite #4810 Coupler Kit



HITCH INSTALLATION

1. Center the (4) ISRX hitch spades directly over the slots of the industry standard rails and drop down into the slots. The Pullrite name plate should be facing the tailgate (Fig. 1).
2. All four ISRX spades should seat into the ISR slots simultaneously if possible (Fig 1). If the slots do not align with the spade and are too tight to drop in, it may help to loosen the ISR bolts. Adjust rails enough for spades to match up evenly with rail slots and fall into place. After seating the hitch, re-torque the ISR bolts back to the original manufacturer's specifications.
3. Slide release pin through rail slot and hitch spade inside the rail and secure with pin clip as seen below (Fig. 2 & 3). Repeat for each of the remaining release pins and clips.

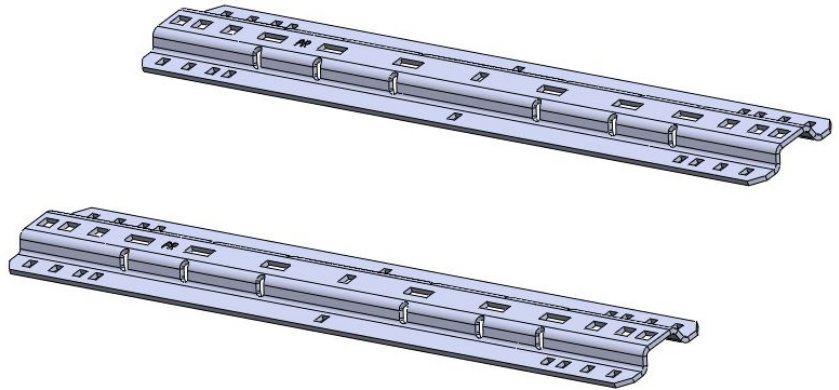
SHOWN WITH #4820 KIT



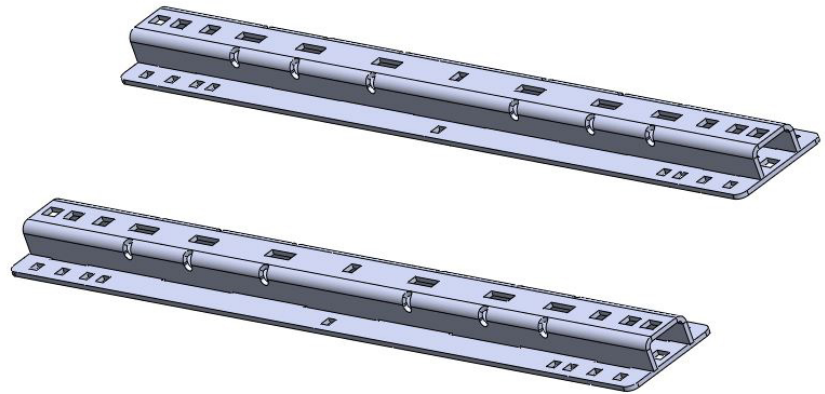
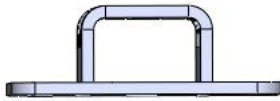
ISRX COMPATIBLE RAILS

The ISRX hitch is compatible with the rail mounting systems listed below.

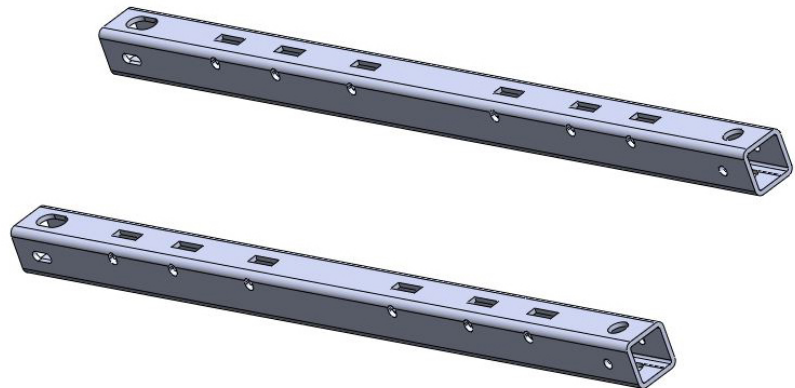
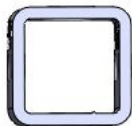
INDUSTRY STANDARD RAILS



HEAVY DUTY RAILS



PULLRITE SUPER RAILS*

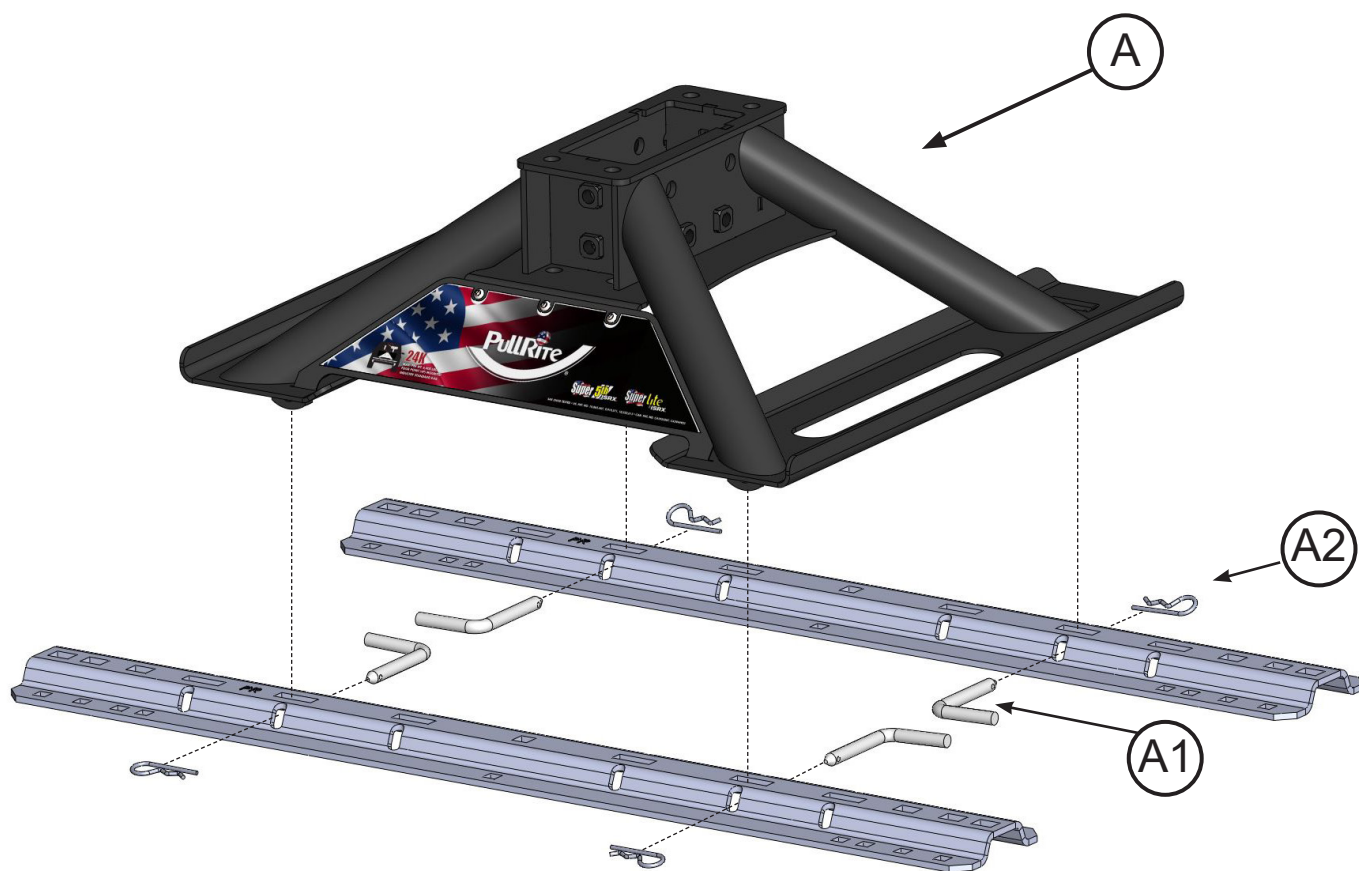


*Refer to the PullRite fit chart to determine which Super Rails are right for your truck.

#4600 / #4615 PARTS LIST

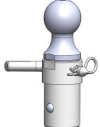


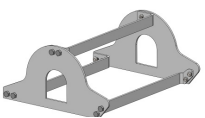

	NAME	PART NO.	QTY	DESCRIPTION
A	ISRX HITCH BASE	4630	1	
BASE HARDWARE				
A1	BASE RAIL RELEASE PIN	27090001	4	Curved Hitch Pin
A2	#9 HITCH PIN CLIP	98410143	4	3 1/16" Zinc Plated Hitch Pin Clip

#4630 ISRX EXPLODED VIEW



RELATED ACCESSORIES

PullRite offers these excellent accessories for towing. These products are American made and available now through PullRite dealers.

IMAGE	DESCRIPTION	PART #
	30K OE Series Gooseneck Ball -Fits truck's factory-equipped Tow Prep Package. -American made with patented TwistLock technology. -Zinc finish.	4436
	30K OE Series Gooseneck Ball w/ Plate -Fits truck's factory-equipped Tow Prep Package. -American made with patented TwistLock technology. -Hard nickel finish resistant to scratches.	4437
	Pinbox Rubber Isolator 4446 When the rubber in your Rotoflex is working out of place, this isolator will enable you to force it back into place and keep it there when towing.	4446
	Pinbox Rubber Isolator 4447 Keeps rubber on Rota-Flex pinboxes from working its way out of place. Easier to install upgrade of the #4446 provided rubber is still in place.	4447
	SlipPlate Dry Graphite Lubricant Spray Case of 12 - 12 ounce cans. (Single 12 ounce can - #33040301).	330403

5 YEAR LIMITED WARRANTY

PULLIAM ENTERPRISES, INC. hereinafter referred to as "PULLIAM", warrants to the first retail owner only, this PullRite towing system to be free from defects in materials and workmanship for a period of five (5) years or 31,068 miles (50,000 km) after the installation on purchaser's vehicle, whichever occurs first.

To validate this warranty, the first retail owner must mail the provided warranty card to PULLIAM, or register online at www.pullrite.com, within ten (10) days after installation of said towing system on his vehicle.

The owner is responsible for all normal and preventative maintenance described in the Owner's Manual.

If any defect occurs which the owner believes is covered by this warranty within said five (5) year period, the owner shall contact PULLIAM immediately, either in writing or by telephone call, Attention Customer Service Department. The owner will be instructed to return the hitch at his expense either to an authorized PullRite dealer or to PULLIAM to repair or replace any parts necessary to correct defects in material or workmanship.

Repair or replacement shall be at the sole option of PULLIAM and shall be completed by or on behalf of PULLIAM free of charge for materials and labor.

This warranty gives you specific legal rights, and you may also have other right's which vary from state to state.

THIS WARRANTY SPECIFICALLY *EXCLUDES* EACH OF THE FOLLOWING:

1. Defects in the product resulting from misuse, neglect, accident, loading beyond the vehicle's capacity, failure to comply with instructions contained in the Owner's Manual or unauthorized repairs, replacements, alterations or modifications. "Unauthorized repair, replacements, alterations" are those made without PULLIAM'S prior knowledge and consent.
2. Any incidental or consequential damage including, but not limited to, loss of use of the vehicle, towing charges, vehicle rental, loss of time, inconvenience, travel, gasoline, lodging and telephone expenses, loss of revenue and damages on account of personal injury and property damage. (Some states do not allow the exclusion or limitation of incidental or consequential damages, so these limitations may not apply to you).
3. Repairs or replacements of defects in any PullRite towing system, or part thereof, installed on any vehicle which has been rented, leased or used for any commercial purpose.
4. Any representation, warranty of undertaking made by any dealer or third party beyond the scope of the warranty herein expressed.
5. Any problem resulting in normal deterioration due to wear or exposure.

TO THE EXTENT PERMITTED BY LAW, IMPLIED WARRANTIES OF MERCHANTABILITY AND FITNESS FOR A PARTICULAR PURPOSE ARE LIMITED IN DURATION TO FIVE YEARS FROM THE DATE OF INSTALLATION ON THE FIRST OWNER'S VEHICLE. (SOME STATES, HOWEVER, DO NOT ALLOW LIMITATIONS AS TO DURATION OF IMPLIED WARRANTY, SO THOSE LIMITATIONS MAY NOT APPLY TO YOU).



Product Warranty Registration

As an owner of a PullRite product, you must register your product to be considered for warranty coverage. See Owners Manual for further details.

Please note, that you can also register online at www.pullrite.com/warranty.htm.

Name: _____

Address: _____

City: _____ State: _____ Zip: _____

Email Address: _____

Phone (optional): _____

Purchase Price: _____ Date of Purchase: _____

Dealer's Name: _____

Dealer's Address: _____

Dealer's City: _____ Dealer's State: _____ Dealer's Zip: _____

Dealer's Phone: _____

Model Purchased: _____

Vehicle Make: _____ Vehicle Model: _____ Vehicle Year: _____

Vehicle Year: _____ Vehicle Cab Style: _____ Vehicle Bed Length: _____

Did you receive an Owners Manual from the Dealer? Yes / No

What influenced you to buy your hitch? _____

Comments:



MANUFACTURED BY:

PULLIAM ENTERPRISES, INC.
13790 East Jefferson Blvd.
Mishawaka, IN 46545
(574) 259-1520 • (800) 443-2307
info@pullrite.com • www.pullrite.com