



MOUNTING KITS - ISR SERIES

Our Mounting Kits are better than the "other guy's" and are constructed from high quality materials made here in the USA. Custom Brackets require less drilling and install faster, and our Universal kits fit more trucks without ordering extra kits.



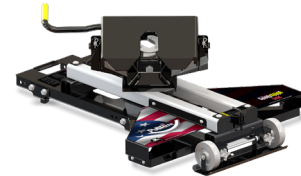
SuperLite

#2400 - 20K
#4615 - 24K
(King Pin Adapter & Handle Included)



Super 5th

#1900 - 16K
#2100 - 20K
#2200 - 24K
#4600 - 24K



SuperGlide

#2700 - 16K
#2900 - 20K
#2300 - 24K
#3200 - 14K **

NOTE: To determine the total tow capacity of a system, you must consider the weight ratings of each component in that system. This includes, but may not be limited to, the rating of the tow vehicle, the fifth wheel hitch, and the hitch's mounting system. Actual tow capacity of the system will be equal to the lowest rated component.

UNIVERSAL	UNIVERSAL HEAVY DUTY	CUSTOM	CUSTOM HEAVY DUTY	SUPERRAIL
PullRite#	PullRite#	PullRite#	PullRite#	PullRite#

GM					
2020-2024	2500 & 3500 (No Drill)			2770	2338
2016-2019	2500 & 3500 (No Drill) <i>Designed for easier install</i>			2762	
2011-2019	2500 & 3500 (No Drill)			2724	2226
2001-2016	2500 & 3500 HD	2720	2220		
1999-2010	2500 & 3500 HD			2734	2224
2019-2024	1500 (New Body Style)			2768	
2007-2019	1500 (6-1/2' bed, old body style)	2720		2730	
RAM					
2013-2024	3500 (No Drill)			2742	
2014-2024	2500 (No Drill)			2746	2336
2013	2500 (No Drill)			2740	
2003-2012	2500 & 3500 (*No Drill) <i>Does not fit 3500 w/ overload springs</i>	2720	2220	2736*	2230*
2016-2024	1500 (Does not fit w/ air bags)			2764	
2009-2015	1500 (Does not fit w/ air bags)			2728	
FORD					
2023-2024	F250 & F350 (No Drill) (fits 2023 models equipped w/ 2023 frame) ***			2774	
2017-2023	F250 & F350 (No Drill) (fits 2023 models equipped w/ 2022 frame) ***			2766	2332
2011-2016	F250 & F350 (No Drill)			2738	2228
1999-2016	F250 & F350	2720	2220		2324
1999-2010	F250 & F350			2726	2228
2021-2024	F150			2772	
2015-2020	F150 (No Drill)			2760	
2004-2014	F150 (No Drill)			2732	
TOYOTA					
2007-2021	TUNDRA (Fits all bed lengths)			2748	

• ALL THE ABOVE KITS FIT LONG OR SHORT BED TRUCKS WITH ANY BRAND ISR HITCH , EXCEPT #3200 SUPERGLIDE WHICH IS DESIGNED FOR SUPER SHORT (5-1/2') BEDS ONLY.
• HD KITS ARE RECOMMENDED FOR HITCHES RATED FOR MORE THAN 20K.
** TO DETERMINE CORRECT SUPER SHORT BED TRUCK/TRAILER COMBINATIONS, GO ONLINE TO PULLRITE.COM/SUPERSHORTBED_HIW.
*** LOOK ABOVE THE AXLE IN THE WHEEL WELL ON THE TRUCK FRAME. 2022 FRAMES WILL HAVE 2 ROUND HOLES...2023 FRAMES WILL HAVE 3.

UNIVERSAL KITS include "L" Brackets, ISR Base Rails and Hardware. Heavy Duty kits include ISR HD Base Rails and Hardware
CUSTOM KITS include Custom Mounting Brackets, ISR Base Rails and Hardware. Heavy Duty kits include ISR HD Base Rails and Hardware
SUPERRAIL KITS featuring *Clean Bed Technology* include totally removable SuperRails and Posts, Mounting Brackets and Hardware for a clean truck bed!



MOUNTING KITS - TRADITIONAL SERIES

Our Mounting Kits are better than the "other guy's" and are constructed from high quality materials made here in the USA. Custom Brackets require less drilling and install faster, and our Universal kits fit more trucks without ordering extra kits.



#4100 - 16K (left)
#4400 - 20K (right)
Universal Mounting Kits only applicable for #4100 and #4400 SuperGlide models



SUPER SHORT BED SOLUTION

#3100 - 12K
#3100 SuperRail Mounting Kits only applicable to the #3100 Traditional Series SuperGlide

NOTE: To determine the total tow capacity of a system, you must consider the weight ratings of each component in that system. This includes, but may not be limited to, the rating of the tow vehicle, the fifth wheel hitch, and the hitch's mounting system. Actual tow capacity of the system will be equal to the lowest rated component.

UNIVERSAL	SUPERRAIL	#3100 SUPERRAIL
PullRite#	PullRite#	PullRite#

GM				
2011-2019	2500 & 3500 (No Drill)		4428	
1999-2010	2500 & 3500	3340	3345	
2007-2019	1500 (6-1/2' bed, old body style)		4423	
1999-2007	1500 (6-1/2' bed, except 2007 mid-year body change)	3340	3345	
2019-2021	1500 (5'8" bed, new body style)			3124*
2007-2019	1500 (5'8" bed, old body style)			3117*
2004-2007	1500 (5'8" bed, except 2007 current body style)			3114*
RAM				
2013	2500 (No Drill)		4440	
2003-2012	2500 & 3500 (No Drill)		3349	
2019-2021	1500 (5'8", new body style, No Drill) <i>Does not fit Ram 1500 w/ factory air suspension</i>			3125*
2009-2019	1500 (5'7" & 6-1/2' bed, old body style)			3122*
2002-2008	1500 (No Drill)		3349	
1995-2002	(Except '02 1500)	3340	3346	
FORD				
1999-2016	F250 & F350	3340	4426	
2021	F150 (5'6" bed)			3126*
2015-2020	F150 (5'6" bed)			3123*
2004-2014	F150 (6-1/2" bed)		3361	
1997-2003	F150 (6-1/2" bed)	3340	3342	
2009-2014	F150 (5'7" bed)			3119*
2004-2008	SuperCrew F1			3113*
2001-2003	SuperCrew F150 (5'6" bed)			3111*
TOYOTA				
2007-2021	TUNDRA (Double Cab Only, 6-1/2" bed, Universal Rails with Custom Mounting Brackets)	4421		
2001-2006	TUNDRA (Standard Cab)			3112*
2007-2021	TUNDRA (Crew Max, Super Short Bed (5-1/2" bed only)			3118*

* ALL THE ABOVE KITS FIT 6-1/2' SHORT BED TRUCKS, EXCEPT #3100 SUPERGLIDE WHICH IS DESIGNED FOR SUPER SHORT (5-1/2') BEDS ONLY.
* TO DETERMINE CORRECT #3100 SUPERGLIDE TRUCK/TRAILER COMBINATIONS, GO ONLINE TO PULLRITE.COM/SUPERSHORTBED_HIW.

UNIVERSAL KITS include "bolt to the bed" Baseraills, Universal "L" Brackets and Hardware

SUPERRAIL KITS featuring *Clean Bed Technology* include totally removable SuperRails and Posts, Mounting Brackets and Hardware for a clean truck bed!

#3100 SUPERRAIL KITS featuring *Clean Bed Technology* include totally removable SuperRails and Posts, Mounting Brackets and Hardware for a clean truck bed!

SINGLE POINT ATTACHMENT HITCHES



Super 5th
#3900 - 24K



Super Lite
#2600 - 20K
(SuperLite King Pin Adapter and Handle included)

NOTE: In order to determine the total tow capacity of a system, you must consider the weight ratings of each component in that system. Actual tow capacity of the system will be equal to the lowest rated component, including the vehicle tow rating.

MOUNTING HARDWARE	
PullRite#	

GM		
2016-2024	2500 & 3500, long and short bed trucks w/ OE tow package	4437
2008-2024	2500 & 3500, long and short bed trucks w/ aftermarket 2-5/16" gooseneck ball	SEE GOOSENECK MANUFACTURER
RAM		
2008-2024	2500 & 3500, long and short bed trucks w/ OE tow package	4437
2013-2024	2500 & 3500, long and short bed trucks w/ aftermarket 2-5/16" gooseneck ball	SEE GOOSENECK MANUFACTURER
FORD		
2008-2024	F250 & F350, long and short bed trucks w/ OE tow package	4437
2010-2024	F250 & F350, long and short bed trucks w/ aftermarket 2-5/16" gooseneck ball	SEE GOOSENECK MANUFACTURER

OE PUCK SERIES HITCHES & ACCESSORIES



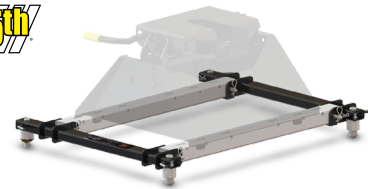
OEX Series
4700 - 25K OEX Super 5TH for Ford OE Puck trucks
4715 - 25K OEX SuperLite for Ford OE Puck trucks
4800 - 25K OEX Super 5TH for Ram OE Puck trucks
4815 - 25K OEX SuperLite for Ram OE Puck trucks
4900 - 25K OEX Super 5TH for GM OE Puck trucks
4915 - 25K OEX SuperLite for GM OE Puck trucks



OE Puck SuperGlides
2714 - 16K for Ford OE Puck trucks
2715 - 16K for GM OE Puck trucks
2914 - 20K for Ford OE Puck trucks
2915 - 20K for GM OE Puck trucks
2315 - 24K for Ram OE Puck trucks
4500 - 24K for GM OE Puck trucks



OE Puck Super 5ths
1300 - 18K for Ford OE Puck trucks
1400 - 25K for Ford OE Puck trucks
1500 - 18K for GM OE Puck trucks
1600 - 25K for GM OE Puck trucks
1800 - 25K for GM OE Puck trucks



OE Puck to ISR Rail Adapters
4439 - 25K for Ram OE Puck trucks
4442 - 20K for Ford OE Puck trucks
4444 - 20K for GM OE Puck trucks
4452 - 25K for GM OE Puck trucks

NOTE: In order to determine the total tow capacity of a system, you must consider the weight ratings of each component in that system. This includes, but may not be limited to, the rating of the tow vehicle, the fifth wheel hitch, and the hitch's mounting system. Actual tow capacity of the system will be equal to the lowest rated component.

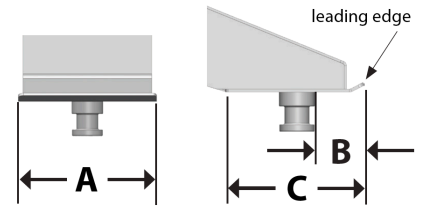
		OEX SERIES SUPER 5 th	OEX SERIES SUPERLITE	OE PUCK SERIES SUPERGLIDE	OE PUCK SERIES SUPER 5 th	OE PUCK TO ISR RAIL ADAPTERS
		PullRite#	PullRite#	PullRite#	PullRite#	PullRite#
GM						
2020-2024	2500 & 3500 for GM trucks w/ OE Puck Mounting System	4900	4915	4500	1800	4452
2016-2019	2500 & 3500 for GM trucks w/ OE Puck Mounting System			2715 2915	1500 1600	4444
RAM						
2014-2024	2500 & 3500 for Ram trucks w/ OE Puck Mounting System	4800	4815	2315	4800	4439
2013	2500 & 3500 for Ram trucks w/ OE Puck Mounting System	4800	4815	2315	4800	4439
FORD						
2010-2024	2500 & 3500 for Ford trucks w/ OE Puck Mounting System	4700	4715	2714 2914	1300 1400	4442

ALL OE PUCK HITCHES AND ABOVE RAIL ADAPTERS feature *Clean Bed Technology* for a clean truck bed!

CAPTURE PLATES - REQUIRED FOR SUPERGLIDE HITCHES

Capture Plates are required for the SuperGlide hitch system. The Capture Plate wedge isolates the king pin from turning in the fifth wheel plate, causing the Cam Assembly to activate and allowing the SuperGlide to move during turns. Most applications slip over the king pin and are held in place by a set screw. To determine your correct Capture Plate:

- 1) Find the manufacturer's name and model number located on your pin box.
- 2) Find the corresponding Quick Connect part number.
- 3) To ensure correct fit, make the following measurements:
 - A: Measure the king pin plate from side-to-side. This is the most important measurement. Be sure this measurement is no more than 1/16" less than the measurement listed in the column below.
 - B: Measure from the leading edge of the king pin to the leading edge of the king pin plate.
 - C: Measure from the rear edge to the leading edge of the king pin plate.



Sizing Chart (recommended)

KING PIN BOX MANUFACTURER	PullRite #	KING PIN BOX MODEL #	"A"	"B"	"C"
MOST POPULAR BRANDS					
Lippert (long)	331704	1621*	12-3/4"	3-3/8"	8-7/8"
Lippert (long)	331705	1621*	13-1/4"	3-3/8"	8-7/8"
Lippert (medium)	331705	1116*	13-1/4"	3-1/2"	9-3/16"
Lippert (long)	331705	1716*	13-1/4"	3-1/4"	8-7/8"
Lippert Rhino Box	331723	Rhino	7-3/8"	2-5/16"	7-3/4"
MOR/ryde (not compatible with Universal or Multi-fit)	331707	Rubber Cushion	13-1/2"	7-5/16"	17-1/2"
Trailair Rota-Flex / Road Armor (not Universal or Multi-fit)	331760	Most Models	13-5/8"	5"	11-7/16"
COMMON BRANDS					
5th Airborne (medium)	331709	Most Models	10-1/2"	6-7/8"	14-1/4"
5th Airborne	331759	Most Models	12"	7-7/8"	19-7/8"
Demco (not Universal)	331750	Most Models	10-3/4"	5"	11-7/8"
Demco (not Universal)	331751	Most Models	11-1/4"	5-1/8"	12-1/16"
Dexter	331731	Most Models	12"	5-9/16"	12-1/4"
Fabex	331720	500's, 765, 770*	13-1/2"	3-1/4"	9-1/4"
Fabex	331706	Most Models	12"	4-5/8"	11-3/8"
Leland	331730	Most Models	14"	5-1/2"	12-1/4"
Lippert (long)	331711	1621 HD*	12-3/4"	4"	8-7/8"
Lippert	331710	0719**	12-3/4"	6-3/8"	12-1/4"
MOR/ryde (not Universal or Multi-fit)	331708	Standard	12-1/2"	4-1/8"	8-7/8"
Reese Revolution	331721	10K Pin Box	10-1/2"	4-1/4"	11"
Reese Revolution (*for 16K with spacers)	331722	16K or 21K Pin Box	13" or 12-1/2"	4-1/4"	11-3/4"
Trailair FlexAir	331761	Most Models	13-1/4"	6-1/8"	12-3/4"
Trailair Rota-Flex / Road Armor (not Universal or Multi-fit)	331756	Most Models	13-3/8"	5-3/8"	11-7/16"
Trailair Tri Glide Airbag/Shock Pin Box	331757	Tri Glide Only	12-3/4"	5-15/16"	ALL
Trailair Airbag/Shock Pin Box	331758	Most Models	13-3/8"	7-3/8"	13-1/2"
MULTI-FIT AND UNIVERSAL CAPTURE PLATES					
Multi-fit Capture Plate	3365	*Fits the indicated pin boxes above	12-3/4" through 13-1/2" & 14"	2-9/16" - 4"	ALL
Multi-fit Capture Plate	3366	**Fits the indicated pin boxes above	12, 12-1/4", 12 3/4"	5-3/16" - 6-5/8"	ALL
Universal Capture Plate Kit	3317	INCLUDES: Universal Capture Plate, Fore & Aft Plate Extensions, Knee Braces and Hardware			